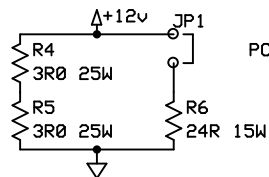
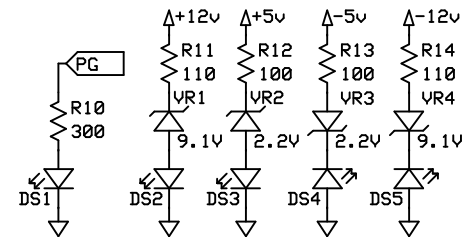
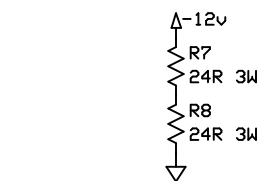
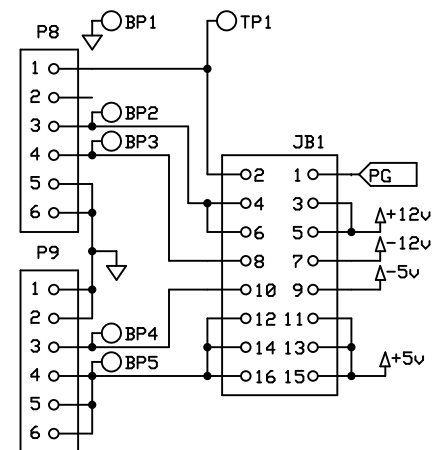


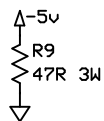
+5V Load - 0.71 Ohms, 7A, 35W



+12V Load - 6 Ohms / 4.8 Ohms, 2A / 2.5A, 24W / 30W



-5V Load - 48 Ohms, 0.25A, 3W



-5V Load - 47 Ohms, 0.11A, 0.53W

D'Asaro Designs		
AT PS Test		
Matthew D'Asaro	Rev 1.0	Page 1/1
	12/1/2014	